

SW 1/4

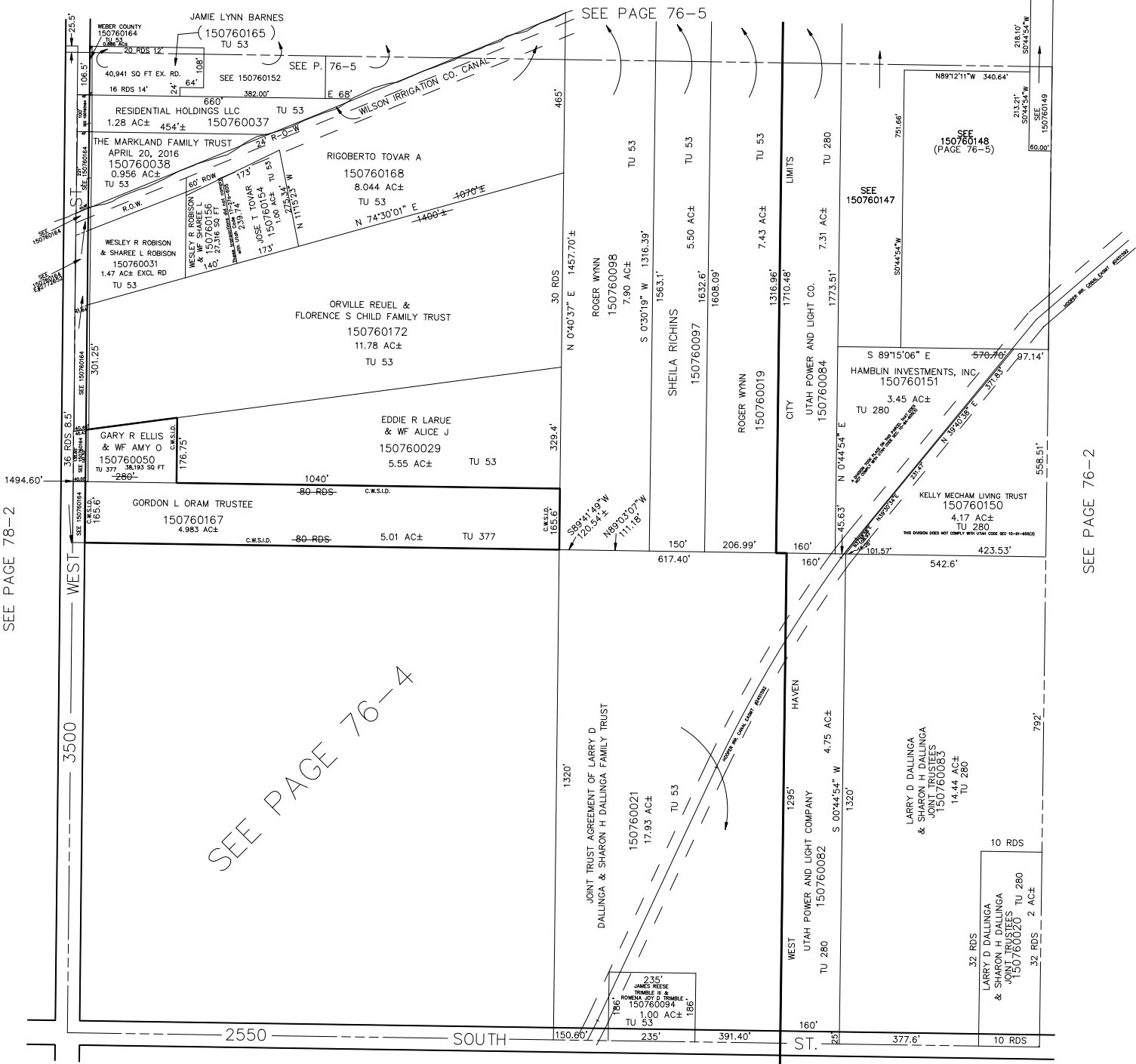
SECTION 27, T.6N., R.2W., S.L.B. & M.

IN WEST HAVEN CITY & WEBER COUNTY

76-3

TAXING UNITS: 53, 280,377

SCALE 1" = 200'



SEE PAGE 78-2

SEE PAGE 76-4

SEE PAGE 76-5

SEE PAGE 76-2

SEE PAGE 92